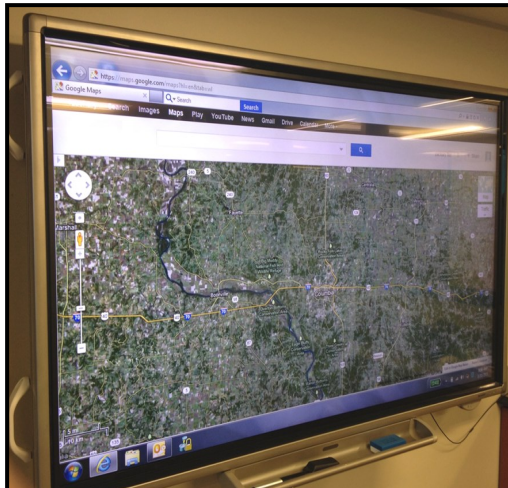


# COLUMBIA WATER & LIGHT

Columbia, MO



**L**amb provided Planning, Detail Design, and Construction Management Services for the new 2,500 S.F. Primary Control Center for this city-owned utility.

The Control Center features two sit-stand operator consoles and one storm/training console, behind an operable glass partition. The main display screen is a 2x7 array of 55" narrow bezel LCD flat panels. In addition to the main video wall, a 60" touch screen display was specified for operator and line-crew coordination.

The secure perimeter also includes a dedicated server room, locker area, and manager office / overview room.



*Robert E. Lamb, Incorporated*

*Planning Design Construction*